

OPENING DOORS SINCE 1843

Loveitts^{est. 1843}
THE ESTATE AGENTS



10 Cheshire Close
Coventry, CV3 1PT

£235,000

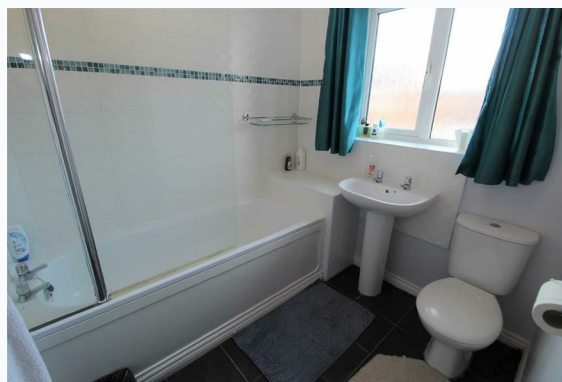


10 Cheshire Close

Coventry, CV3 1PT

A detached family home in New Stoke Village, offered with no onward chain. The property comprises of a lounge with french doors leading out onto the rear garden, separate dining room, fitted kitchen, three bedrooms, en-suite shower to the master and a family bathroom. Further benefits include an integral garage and a driveway to front.

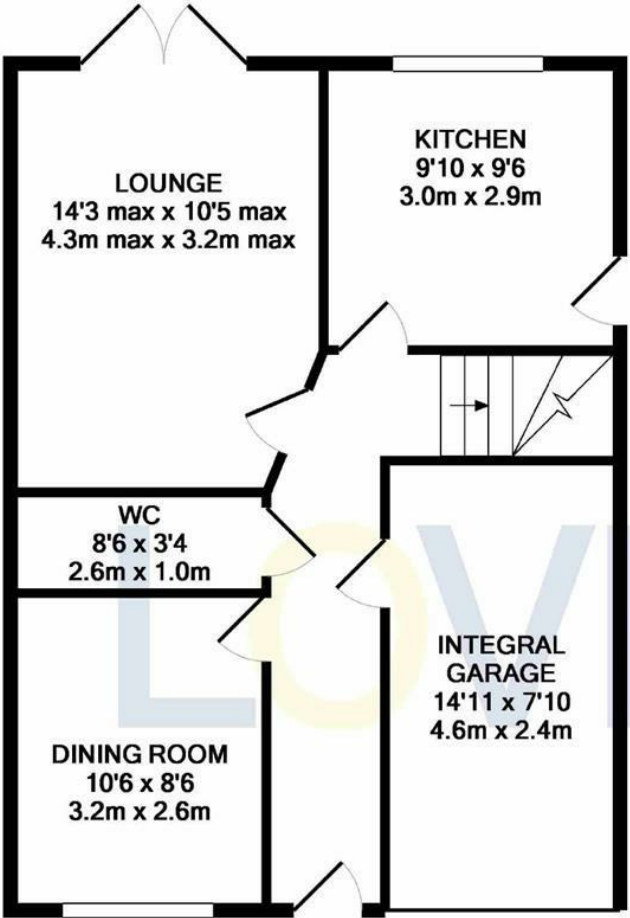




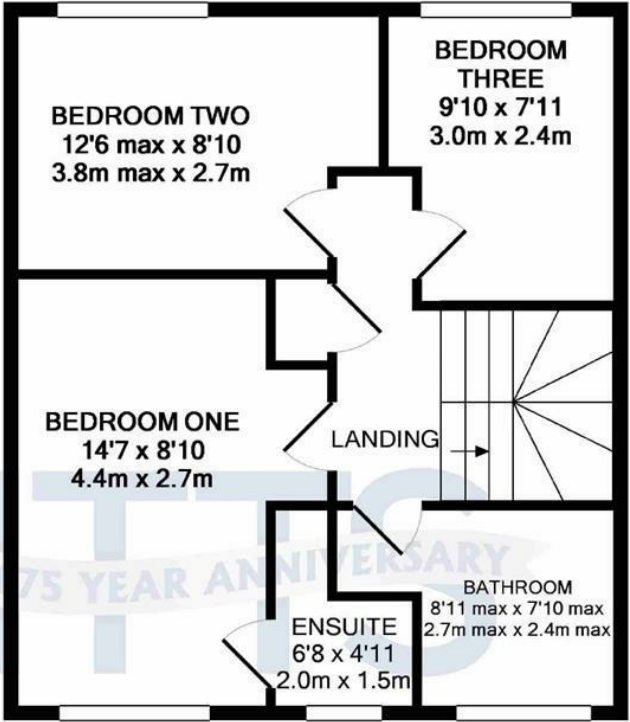
- Detached Family Home
- Three Bedrooms
- En-Suite & Family Bathroom
- Downstairs Cloakroom
- Lounge & Separate Dining Room
- Garage & Off Road Parking
- EPC: C

Floor Plan

Area Map



GROUND FLOOR
APPROX. FLOOR
AREA 569 SQ.FT.
(52.9 SQ.M.)



1ST FLOOR
APPROX. FLOOR
AREA 473 SQ.FT.
(43.9 SQ.M.)

TOTAL APPROX. FLOOR AREA 1042 SQ.FT. (96.8 SQ.M.)

Whilst every attempt has been made to ensure the accuracy of the floor plan contained here, measurements of doors, windows, rooms and any other items are approximate and no responsibility is taken for any error, omission, or mis-statement. This plan is for illustrative purposes only and should be used as such by any prospective purchaser. The services, systems and appliances shown have not been tested and no guarantee as to their operability or efficiency can be given
Made with Metropix ©2019

Energy Efficiency Rating

	Current	Potential
Very energy efficient - lower running costs		
(92 plus) A		89
(81-91) B	77	
(69-80) C		
(55-68) D		
(39-54) E		
(21-38) F		
(1-20) G		
Not energy efficient - higher running costs		
EU Directive 2002/91/EC		
England & Wales		

These particulars, whilst believed to be accurate are set out as a general outline only for guidance and do not constitute any part of an offer or contract. Intending purchasers should not rely on them as statements of representation of fact, but must satisfy themselves by inspection or otherwise as to their accuracy. No person in this firm or its employees has the authority to make or give any representation or warranty in respect of the property.



Coventry
29 Warwick Row, Coventry CV1 1DY
024 7625 8421

Registered in England & Wales Company no. 7558151